

1. Open **2002NPEepromSet V1.0** (file name : 2002NPEepromSet V1.0.exe)

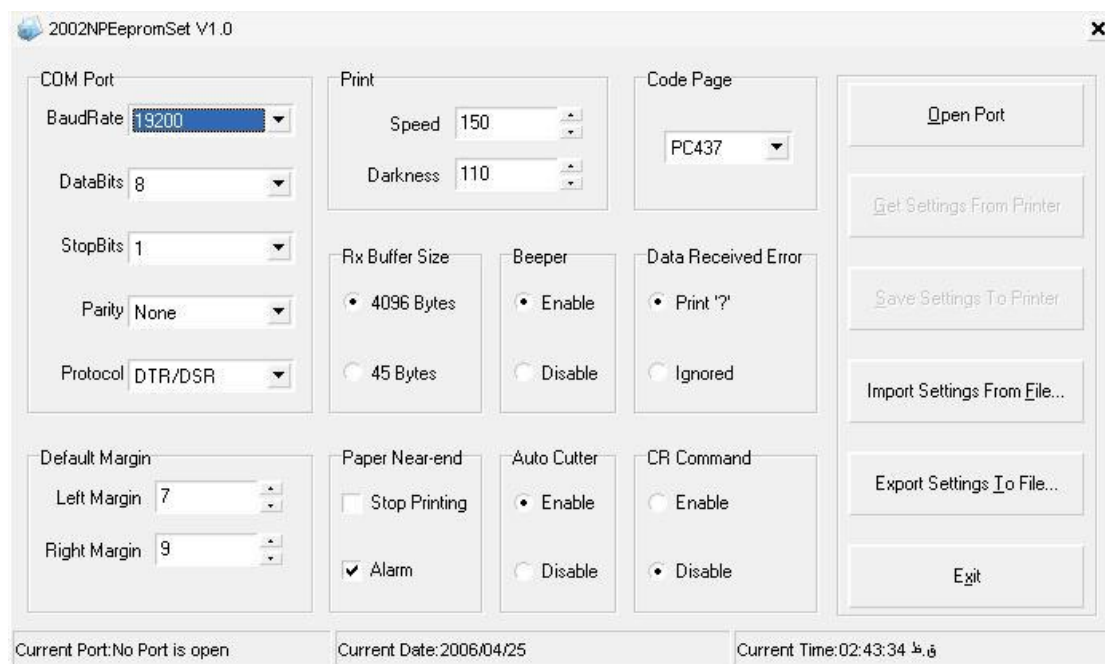


Figure 1

2. Click **Open Port** button

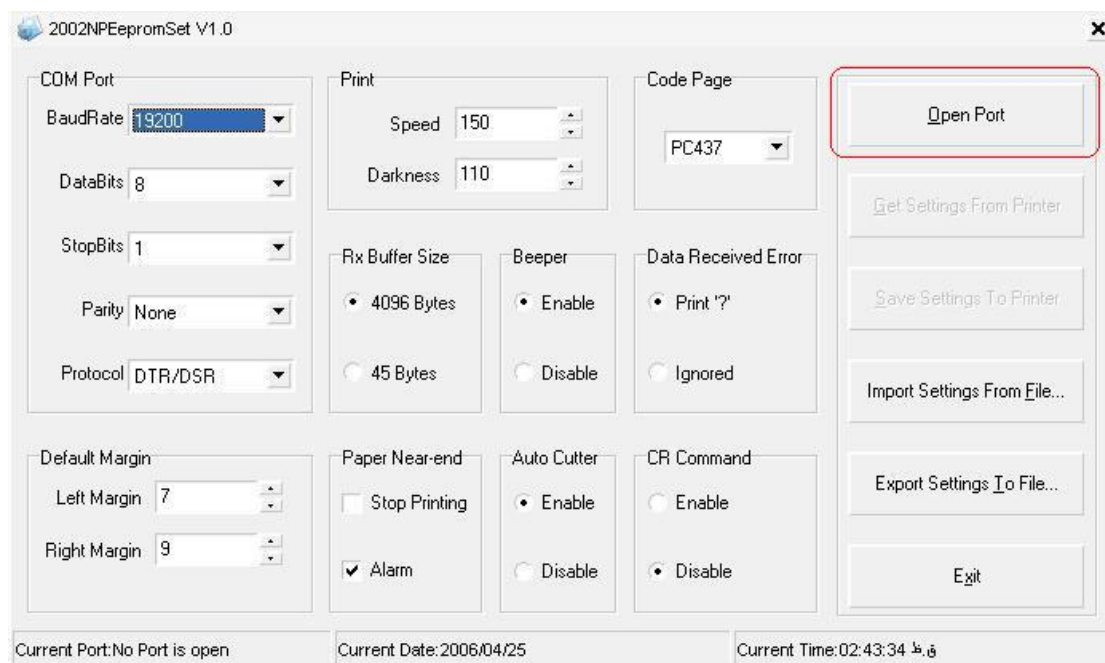


Figure 2

### 3. Choose the right interface

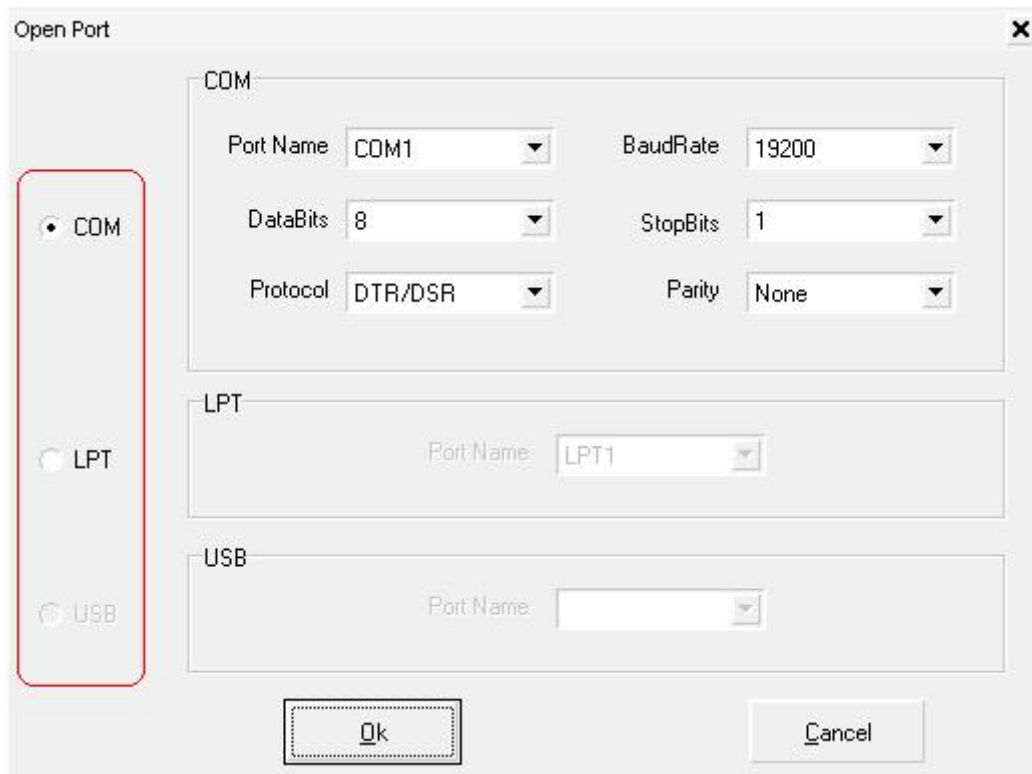


Figure 3

If you chose **COM**, you must adjust COM interface parameters according to printer's setting.

For get printer's setting, perform the following sequence of operations...

- Turn off printer
- While holding the Line Feed button, turn on the printer
- When the red, error indicator light blinks, release the Line Feed button



Figure 4

finally click **OK** button.

4. If you performed correctly the sequences, **Get Setting From Printer** and **Save Setting To Printer** buttons are activated.

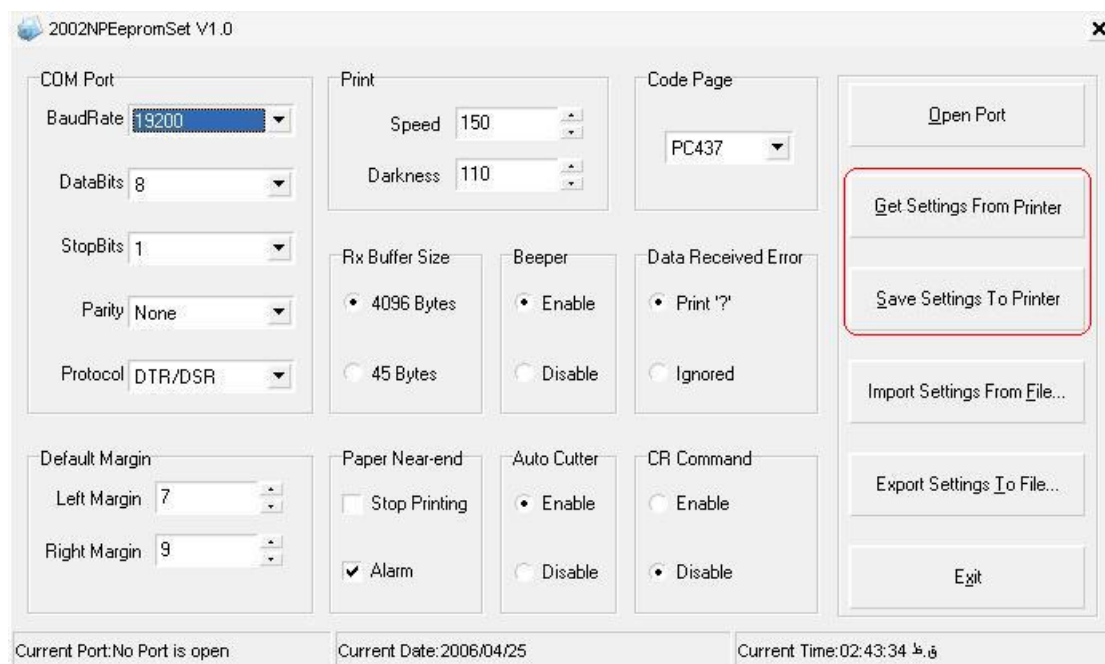


Figure 5

5. Click **Get Setting From Printer** button to the printer's setting is appeared in form.
6. Now you can change printer's setting according to your desire. For example when you want to set printer's baudrate on 9600, you must change BaudRate on 9600 (see figure 6).

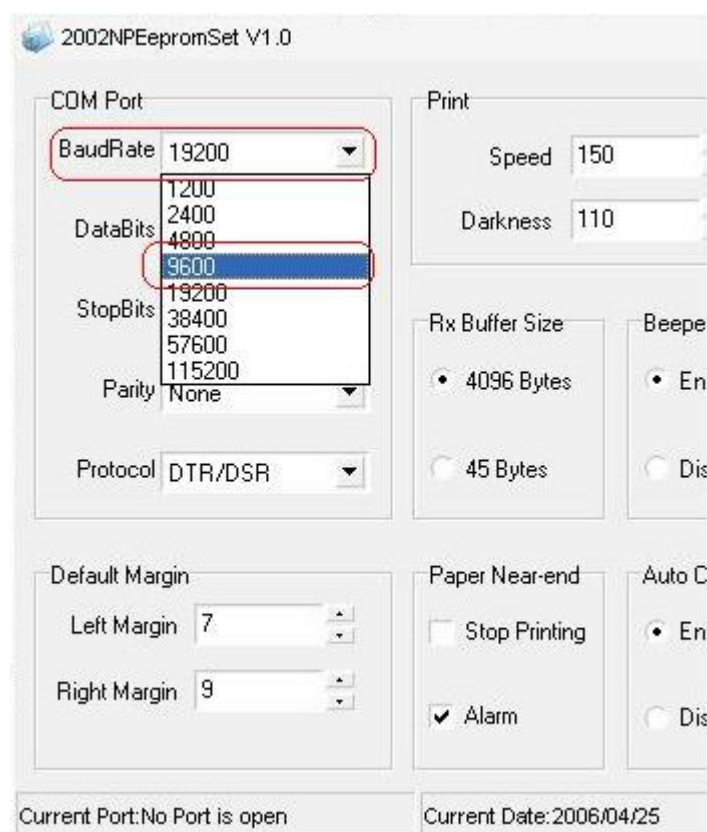


Figure 6

7. Then click **Save Setting To Printer** button.

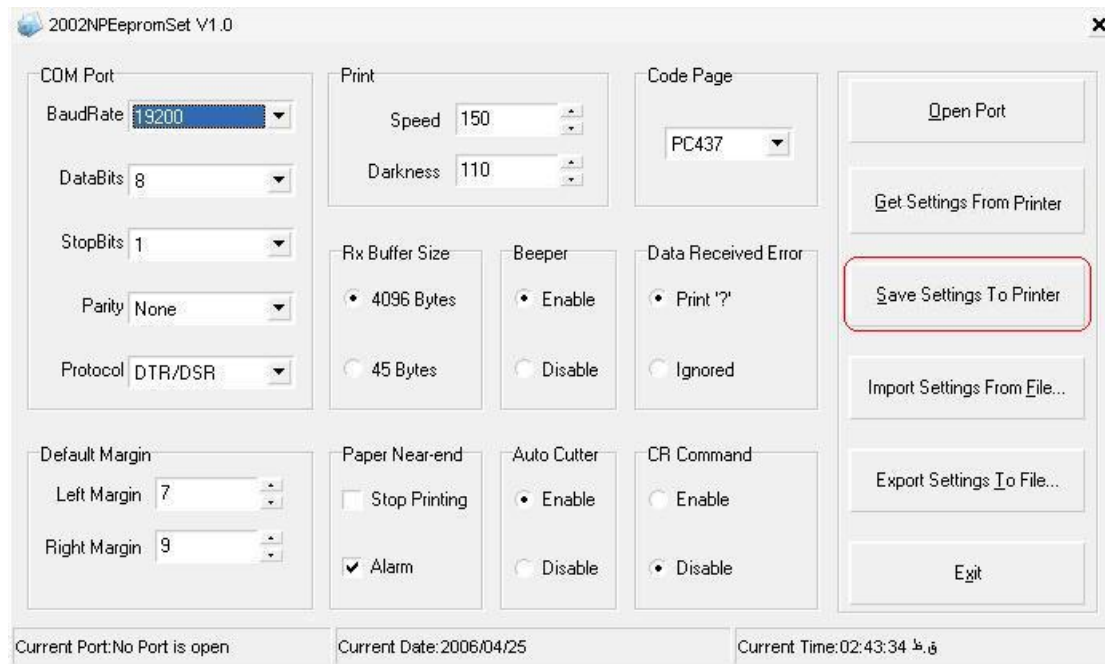


Figure 7

8. Finally for fixing setting, restart the printer.